

Suffolk Schools Reorganisation Review

DIFFERENCES IN SUFFOLK 2 TIER AND 3 TIER SCHOOLS' PERFORMANCE AT KS2 ARE **NOT DUE TO THEIR ORGANISATIONAL STRUCTURE**, THEY ARE **DUE TO SOCIO-ECONOMIC VARIATIONS** IN THEIR CATCHMENT DISTRICT

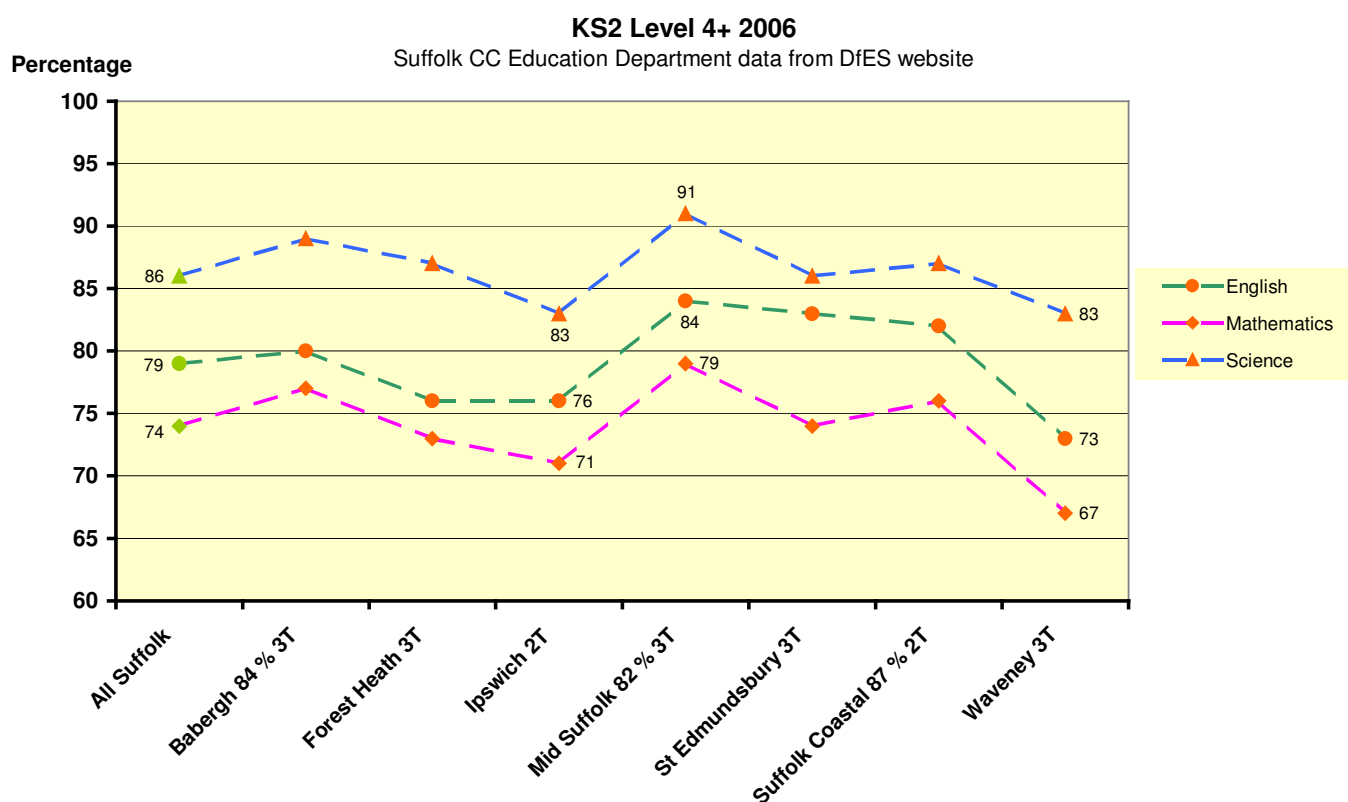
The analysis below confirms this finding.

DATA SOURCE

- The data used is Suffolk County Council Education Department 2006 KS2 level 4+ results (Table 68) and 2006 Acorn socio-economic data for the KS2 eligible pupils (Table 69), arranged by Suffolk District, submitted to the DfES and downloaded from the DfES website.
- It is part of the DfES National Curriculum Assessment. The dataset title on the website is Addition5.
- Webpage location is: <http://www.dfes.gov.uk/rsgateway/DB/SFR/s000693/Addition5.xls>

2006 KS2 DATA

- KS2 level 4+ data is listed for all three subjects - English, Mathematics and Science.
- Suffolk has seven Districts – alphabetically these are Babergh, Forest Heath, Ipswich, Mid Suffolk, Suffolk Coastal and Waveney. The Suffolk wide percentages (All Suffolk) are also provided.
- 2 tier and 3 tier Districts
 - 1 District - Ipswich is 100% 2 tier schools.
 - 1 District - Suffolk Coastal (87% 2T) is dominated by 2 tier schools.
 - 2 Districts - Babergh (84% 3T) and Mid Suffolk (82% 3T) are dominated by 3 tier schools.
 - 3 Districts - Forest Heath, St. Edmundsbury, and Waveney have 100% 3 tier schools.
- 'Mixed' tier percentages have been calculated by identifying individual schools in the



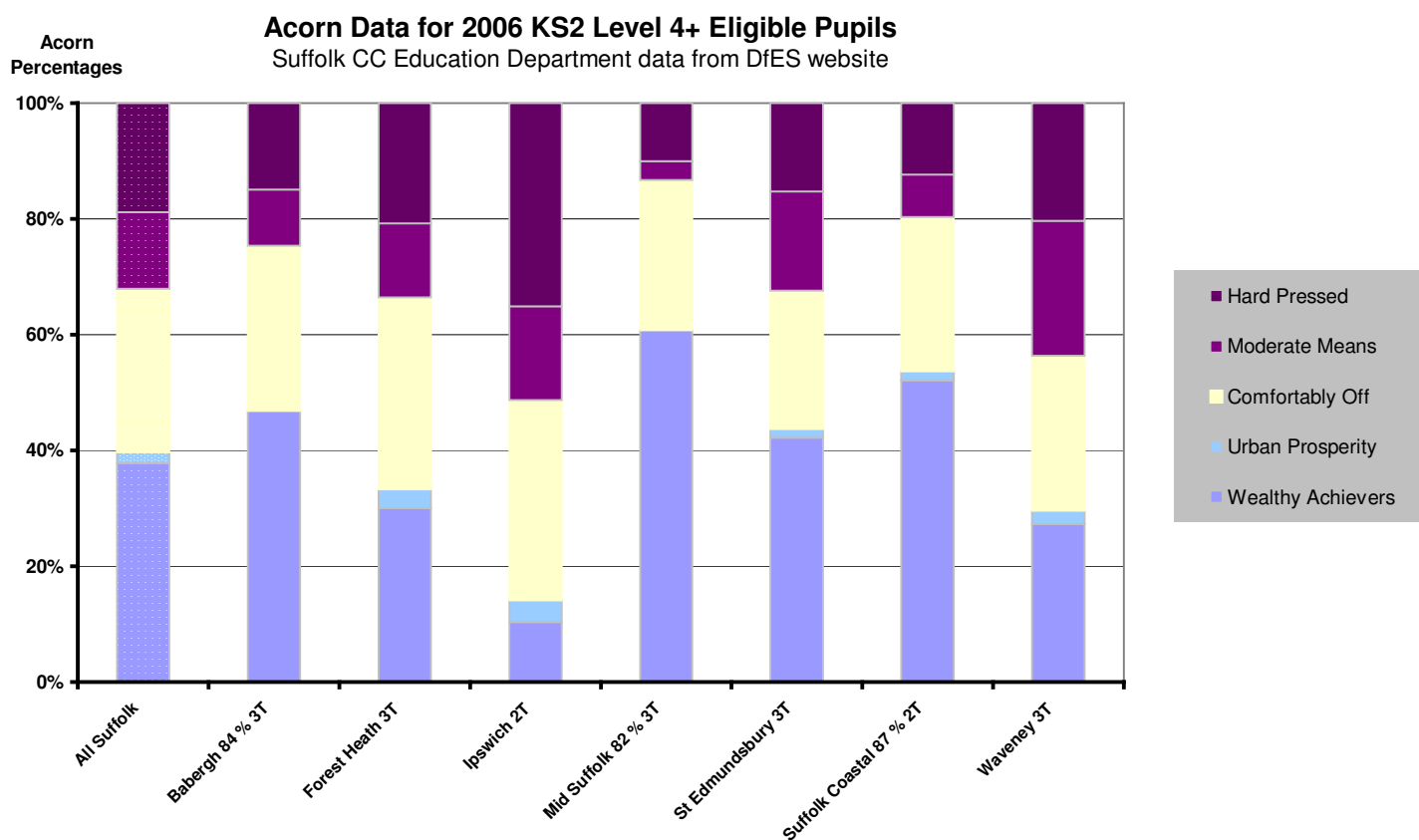
District, taking the number of their eligible pupils, and calculating the percentage of the District's total eligible pupils which they represent (Appendix A for details).

2006 KS2 OBSERVATIONS

- Results for all three subjects follow the same pattern across the Districts – when one subject goes up so do the other 2 and vice versa.
- Ipswich 2T under-performs the All Suffolk (green symbols) in all three subjects and in all but one of the 3T Districts. Only Waveney 3T has a worse performance in two subjects and ties for bottom place with Ipswich 2T in Science.
- Mid Suffolk (82% 3T) is the best performing District in Suffolk in all three subjects.
- Babergh (84% 3T) and Suffolk Coastal (87% 2T) have comparable performance across all three subjects.

2006 ACORN DATA

- Acorn data uses the postcode of individual eligible pupils' address to categorise the socio-economic characteristics of that location.
- There are 5 categories: Hard Pressed, Moderate Means, Comfortably Off, Urban Prosperity and Wealthy Achievers.
- Acorn socio-economic data has been used in the Suffolk Schools Reorganisation Review report.
- Data are plotted to show relative percentages of the Acorn categories in each District.
- All Suffolk percentages are shown dotted.

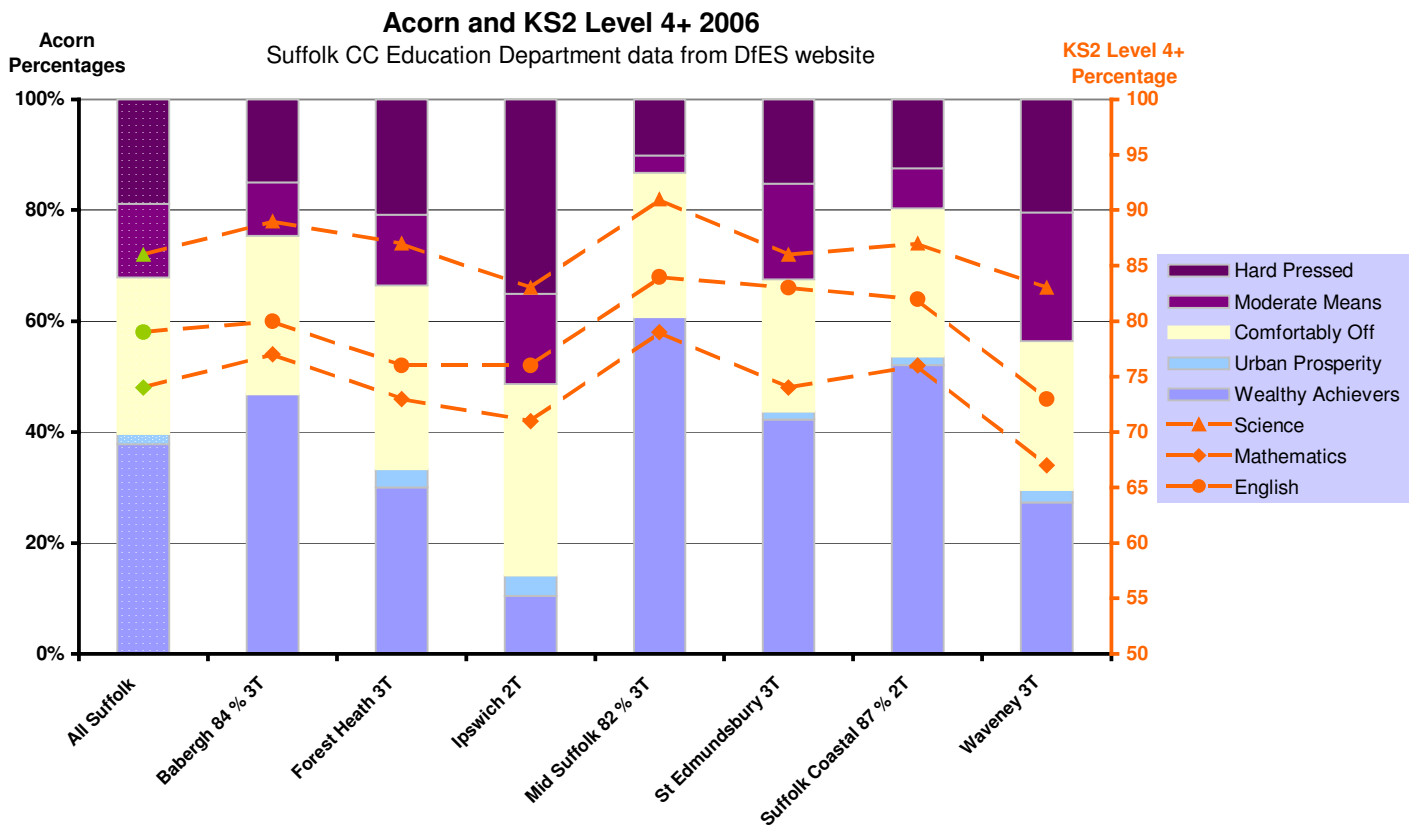


2006 ACORN OBSERVATIONS

- Ipswich 2T and Waveney 3T have the largest and second largest percentages of Hard Pressed and Moderate Means categories, respectively. They also have the smallest and second smallest percentages of Wealthy Achievers and Urban Prosperity.
- Mid Suffolk (82% 3T) has the smallest percentage of Hard Pressed and Moderate Means categories and the largest percentage of Wealthy Achievers and Urban Prosperity.
- The other Districts all have their own distinct profiles of Acorn categories.

2006 KS2 AND ACORN DATA

- KS2 level 4+ data and Acorn data by Suffolk District are shown below on the same graph.



2006 KS2 AND ACORN OBSERVATIONS

- KS2 data across all Districts track the variations in Hard Pressed plus Moderate Means. When these percentages increase, the KS2 performance decreases. When these percentages decrease, the KS2 performance increases.
- KS2 data across all Districts track the variations in Wealthy Achievers and Urban Prosperity. Where these percentages increase, the KS2 performance increases. When these percentages decrease, the KS2 performance decreases.
- Ipswich 2T and Waveney 3T are the two worst KS2 performing Districts and they have the least 'advantageous' Acorn percentages in Suffolk.

- Mid Suffolk (82% 3T) is the top KS2 performing District and it has exceptionally high 'advantageous' Acorn percentages.
- Other Districts regardless of whether they are 3T, dominated by 3T or dominated by 2T show the same tracking with Acorn percentages.

CONCLUSION

- Differences in KS2 level 4+ performance are **not due to the Schools' Organisational Structure** – 2 tier or 3 tier.
- Differences in KS2 level 4+ performance are **due to socio-economic variations in the catchment District.**
- Differences in the performance results for older children for example, GSCE results will also be **due to socio-economic variations in the catchment District** and will show behaviour consistent with KS2 results.

CHANGING TO A SINGLE ORGANISATIONAL STRUCTURE FOR SCHOOLS THROUGHOUT SUFFOLK

CAN NOT AND WILL NOT

IMPROVE SUFFOLK SCHOOLS' PERFORMANCE

Dr Viv Hughes PhD. MBA, ARCS
Barrow House,
The Green,
Barrow
Bury St. Edmunds
Suffolk
IP29 5DT

APPENDIX A - Mixed District percentage calculations

- Suffolk Coastal District is dominated by 2 tier schools. However, it does have two 3 tier Middle Schools. From the 2006 KS2 level 4+ by individual school (downloaded from DfES website), the total number of eligible pupils for these two schools was found. These figures were then used to reduce the percentage of 2 tier for Suffolk Coastal from 100% to 87%.
- Babergh and its neighbouring district Mid Suffolk are both dominated by 3 tier schools. However, they do have nine 2T primary schools between them.
 - Again, eligible pupil numbers for the relevant individual schools were taken from the KS2 level 4+ data.
 - Numbers are shown below as approx. for these two Districts because, whilst the total number of 2T pupils across the two Districts is known exactly, it is possible that one of the schools (say, 25 eligible pupils) has been misallocated across their shared boundary into the other District. This would result in an error in revised percentages for Babergh of 2.7% and Mid Suffolk of 2.3%.

	Eligible Pupils							
	All Suffolk	Babergh 84 % 3T	Forest Heath 3T	Ipswich 2T	Mid Suffolk 82 % 3T	St Edmundsbury 3T	Suffolk Coastal 87 % 2T	Waveney 3T
Total numbers	7,767	922	449	1,439	1,074	1,164	1,370	1,349
2T numbers	approx. 2975	approx. 150	0	1439	approx. 190	0	1196	0
3T numbers	approx. 4792	approx. 772	449	0	approx. 884	1164	174	1349
2T percentages	38%	16%	0%	100%	18%	0%	87%	0%
3T percentages	62%	84%	100%	0%	82%	100%	13%	100%